

## Environmental Health & Safety

January 2005

### **Mercury Containing Lamp Handling, Storage and Disposal Procedures**

#### **Applicability**

Mercury containing lamps include the following:

- Fluorescent (silver end and green end)
- High Pressure Sodium
- Mercury Vapor
- Metal Halide
- Neon
- High Intensity Discharge (HID)

#### **Intact Lamps**

Intact mercury containing lamps are a Universal Waste and are subject to Universal Waste Rules per 6NYCRR subpart 374.3.

#### **Broken Lamps**

Broken mercury containing lamps are a Hazardous Waste and are subject to Hazardous Waste Rules per 6NYCRR parts 370 – 374 and 376.

#### **Handling**

- Wear proper Personal Protective Equipment (i.e. minimum safety glasses/goggles, and gloves).
- Do not intentionally break lamps.
- VENTILATE THE AREA IMMEDIATELY FOR 5-10 MINUTES IF A LAMP BREAKS TO PREVENT EXPOSURE TO MERCURY VAPOR.

#### **Storage & Disposal**

MERCURY CONTAINING LAMPS CANNOT BE DISPOSED IN THE NORMAL TRASH.

#### **Intact Lamps**

- Store intact lamps in boxes designed for storing lamps (i.e., save the boxes the new lamps came in for storage of used lamps.) If boxes are not available, contact Environmental Health & Safety (EH&S) at 777-2211 for fiber drums.
- Pack the boxes carefully and to full capacity to prevent lamp breakage. Secure boxes shut with tape.

- Label each box with the following label:

**UNIVERSAL WASTE LAMPS**

Building# \_\_\_\_\_

Room# \_\_\_\_\_

Start Date: \_\_\_\_\_

Initials: \_\_\_\_\_

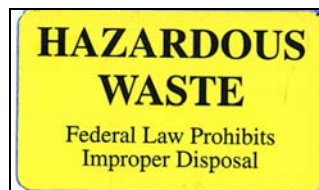
Do NOT put broken lamps in this box.  
Tape box securely closed when full.

- Fill in the “Start Date” when the first lamp is placed in the box.
- Store full boxes of lamps in room BG02 of the Academic A building.
- Intact lamps must be shipped off site within 1 year from date of generation. The raw materials are recycled.

### Broken Lamps

- All broken lamps must be completely cleaned up.
- Do not store broken lamps with intact lamps.
- Place broken lamps and debris in the designated drum.
- Keep the drum closed when not adding waste to it.
- Label the drum with the following:

1. Hazardous Waste Label



2. Hazardous Chemical Waste Tag - indicate the drum contains “Broken Mercury Containing Lamps”.

HAZARDOUS CHEMICAL WASTE TAG  
(see directions on reverse side)

**TAG# 9973**

Print Your Name: \_\_\_\_\_ Building and Room Number: \_\_\_\_\_ Phone: \_\_\_\_\_

Total Amount in Container: \_\_\_\_\_ Container Size: \_\_\_\_\_ Generation Code: \_\_\_\_\_

**COMPLETE CHEMICAL COMPOSITION:** (List approximate % of each constituent including water/solvent)

1. _____ %	5. _____ %
2. _____ %	6. _____ %
3. _____ %	7. _____ %
4. _____ %	8. _____ %

Check if applicable:

Flammable?

Corrosive? pH \_\_\_\_\_

Oxidizer?

Highly Toxic?

Reactive/Explosive?

Starch?

I certify this information is true and that I have done my best to reduce the volume and toxicity of this waste.

Sign Name: \_\_\_\_\_ Date: \_\_\_\_\_

- When the drum is full, immediately contact the Environmental Specialist or Hazardous Waste Manager at EH&S at 777-2211 for transfer to the hazardous waste accumulation building.
- Do not accumulate full drums of broken lamps.
- Never accumulate more than 55 gallons of broken lamps.